



# Moving Mountains

Year-Round Mountain and Snowsports  
Resorts in Major Market Destinations

**South County Federation - Fairfax Peak Project | 16 February 2021**

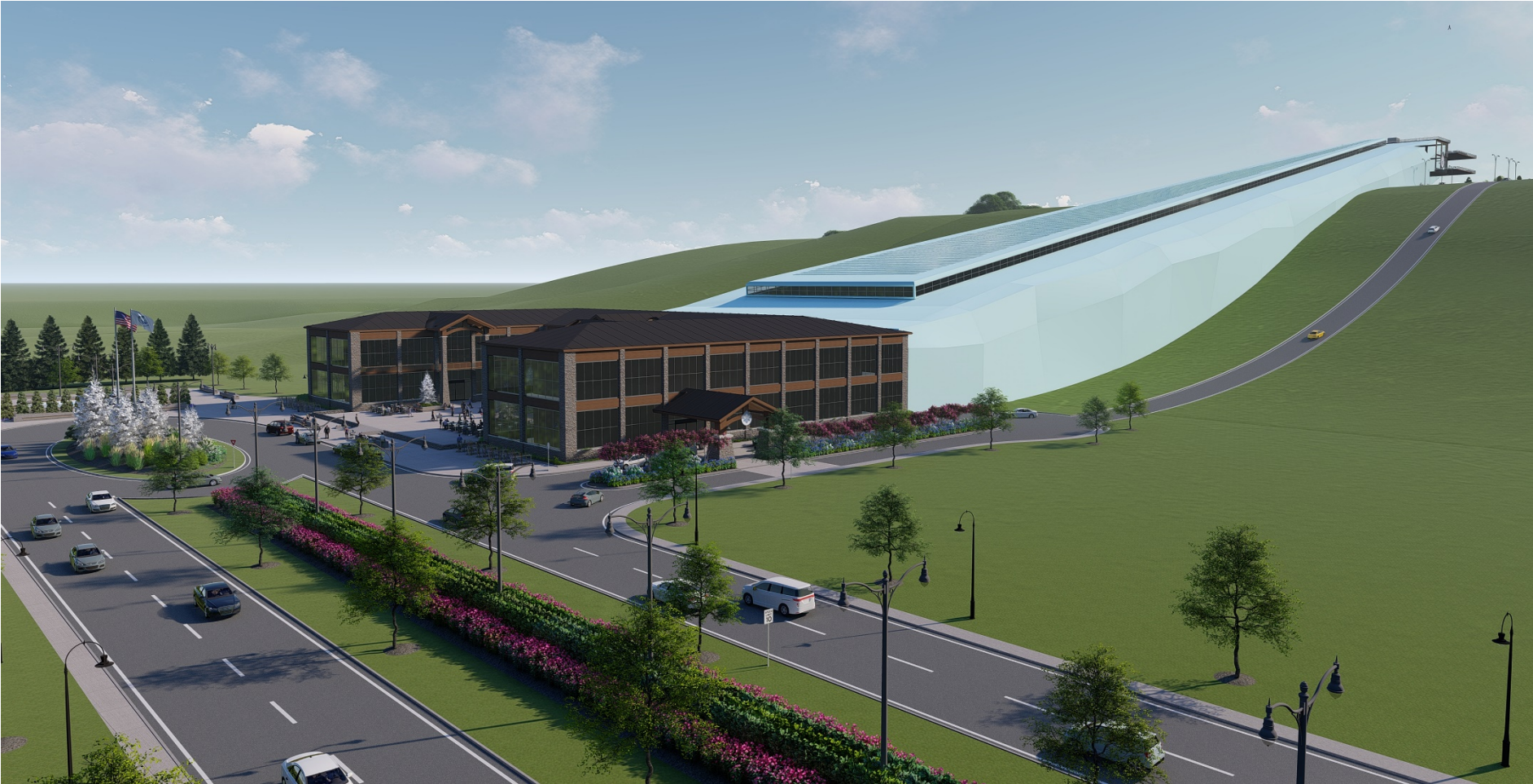


# Agenda

- What is Fairfax Peak?
- Commitment to Our Community
- Our Team





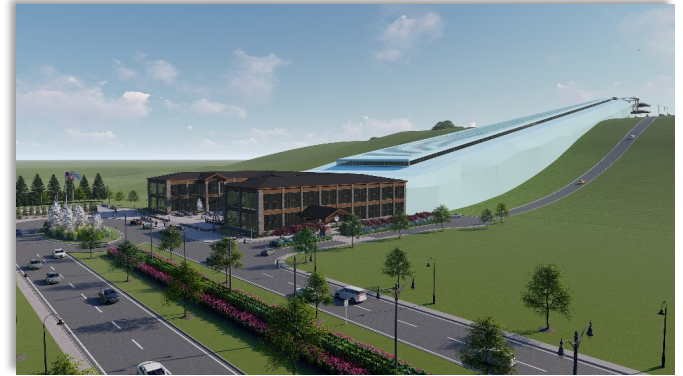


Alpine·X

# Fairfax Peak

- Family-friendly recreation and entertainment resort complex
- Innovative re-use of landfill
- Appeal to whole community
- Year-round access

Yes! Real Snow Indoors!



# Resort Highlights

- Clean, safe, family fun for any skill level
- Mix of snow/mountain, water, and other entertainment attractions
- ~1,700 ft. long slope and ~300 ft. vertical drop
- Snowsports camps and teams
- Consistent snow conditions
- Competitive snowsports events





# Snowsports for Everyone

- Inclusive destination for the entire community
- Low- and no-skill activities, as well as free and low-cost activities
- Unique educational opportunities
- Variable pricing to make facilities accessible to a wider range of people
- Sponsorships and discounted rates for schools and teams
- Explore public transportation options

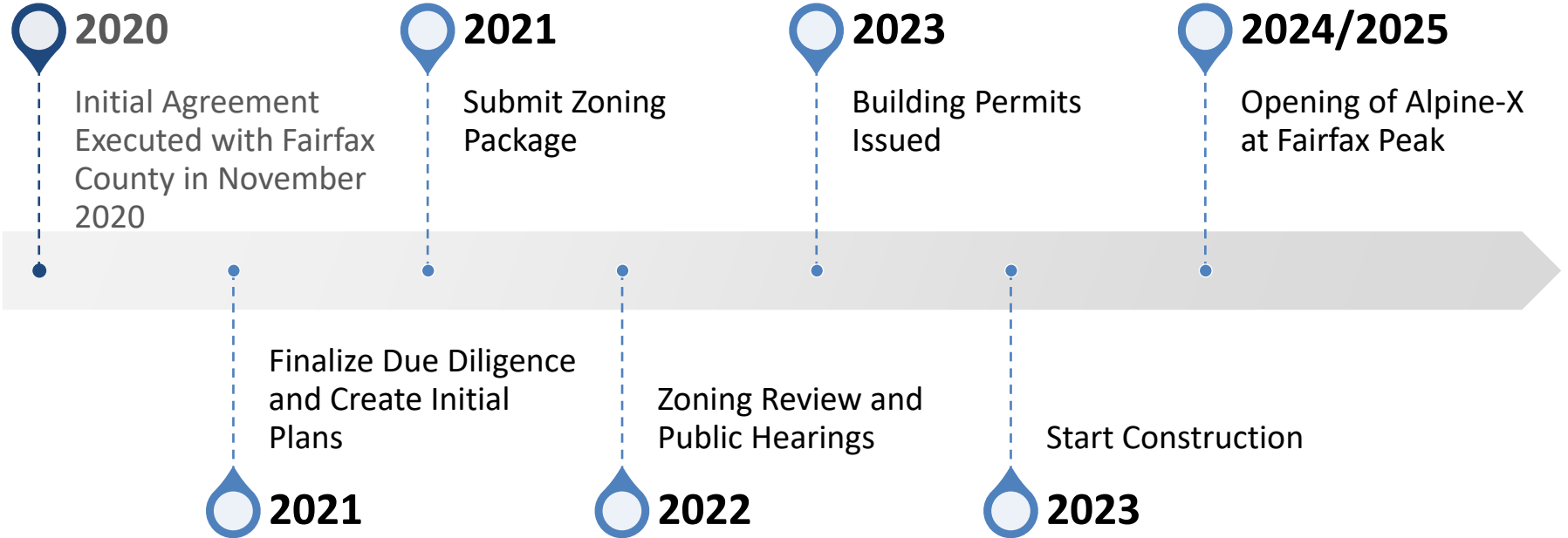
# Fairfax Peak – Status Updates

- Initial Agreement Executed with Fairfax County
- Due Diligence Underway
  - Studies on the landfill
  - Engineering analysis
  - Environmental studies
  - Transportation studies
  - Surveys



Settlement Plates on Landfill

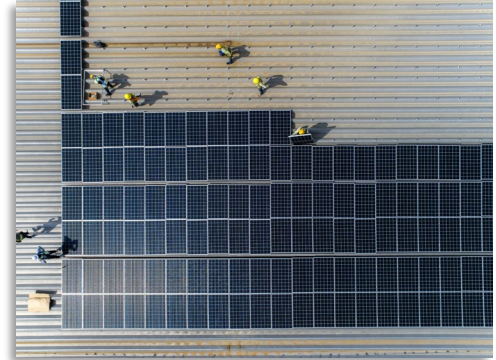
# Current Estimated Timeline





# Environmental – Power and Energy

- Utilize renewable energy
- Goal of 100% onsite production for snow dome
- Indoor snow dome is inherently efficient by design
- State-of-the-art technology for energy efficiency



# Environmental – Water & Wastewater

- Water used for snowmaking will be filtered and reused
- Water capture/reuse initiatives and environmental engineering to mitigate run-off from development
- Utilization of technologies both inside and outside of facility for water conservation and water protection
- Plant local, native flora outside of facility



Famartin, CC BY-SA 4.0, via Wikimedia Commons

# Traffic Impacts

- Traffic studies to be conducted
- Multiple ingress/egress points
- Expect wide distribution of visitor arrivals due to operating model



# Job Creation and Opportunities

- Between 300 and 500 permanent, year-round jobs in an upbeat and fun environment
- Hire inclusively and ensure employment opportunities for the entire community
- Every team member is integral to our guests' experience
- Our team will be staffed locally
- Provide a competitive wage and range of benefits
- Provide training, including leadership and development
- Our team members will be actively involved with the local community



# There's No Place We'd Rather Be

- Recreational to competitive snowsports minutes from home
- Fun, healthy, family-focused addition to our community

Email us at:

[info@alpine-x.com](mailto:info@alpine-x.com)

[www.alpine-x.com](http://www.alpine-x.com)

