

# South County Police Station and Animal Shelter Steering Committee

May 1, 2018 – 7:30pm

Building Design and Construction Division



## Purpose of Meeting

- Recap of Meeting 1
- Revised Site Plan
- Revised 3D Views
- Consensus



# South County Police Station and Animal Shelter

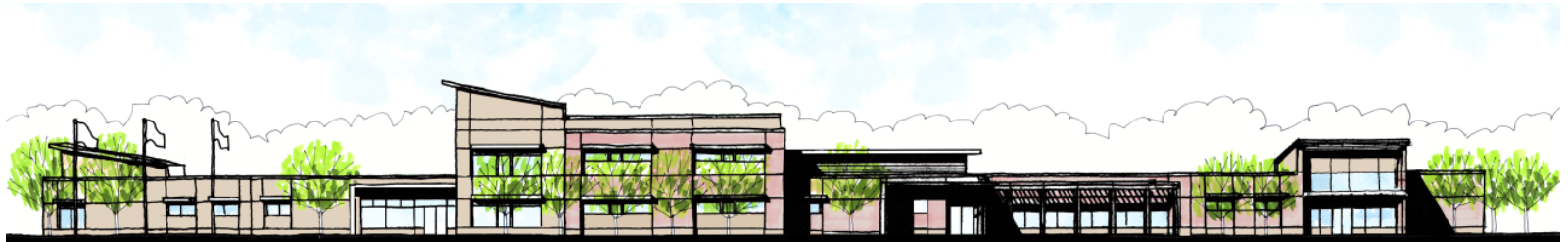
## STEERING COMMITTEE

### Lorton Road Elevations (presented on 3.12.2018)

A



B



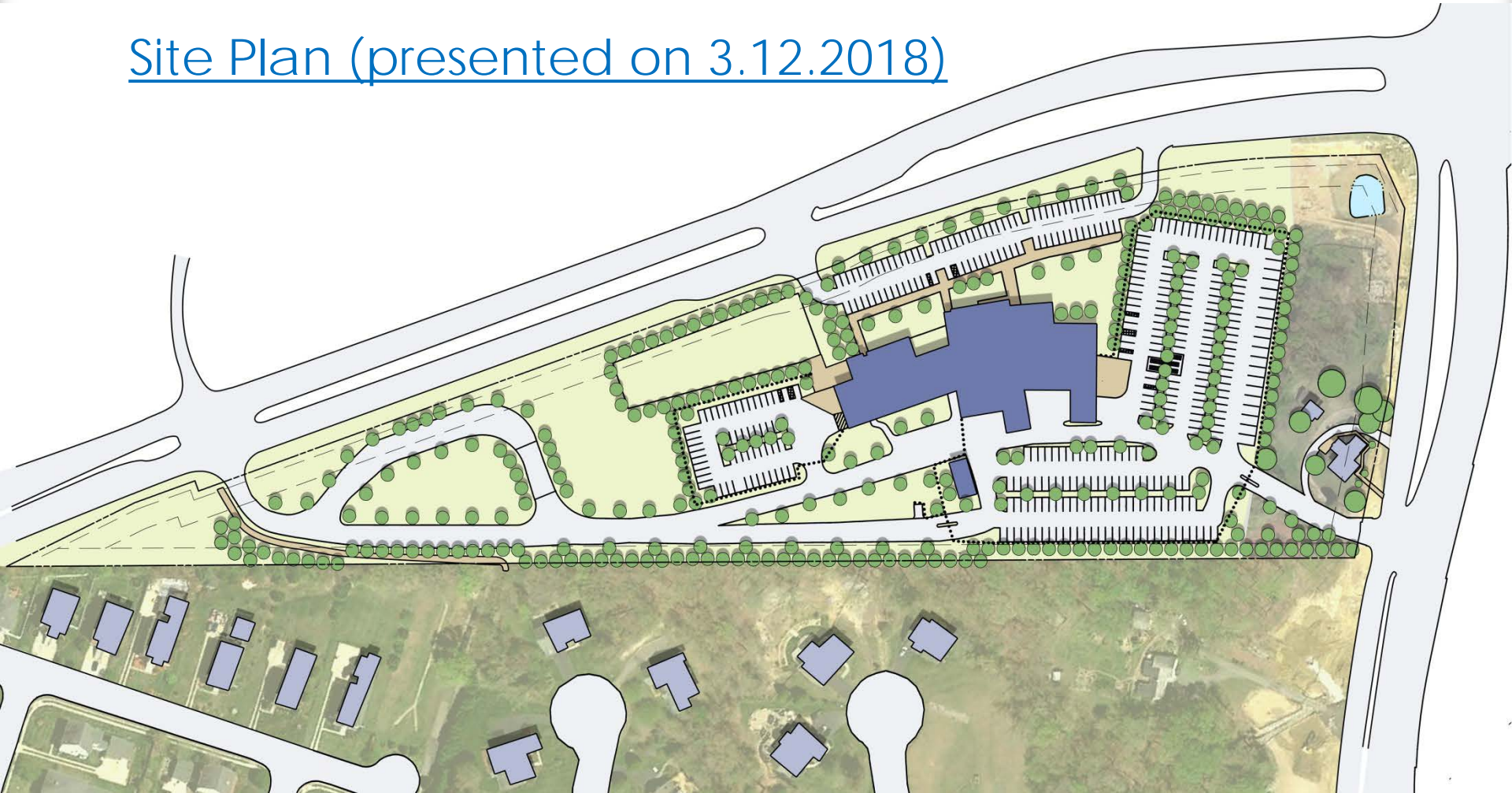
C



South County Police Station and Animal Shelter

# STEERING COMMITTEE

## Site Plan (presented on 3.12.2018)

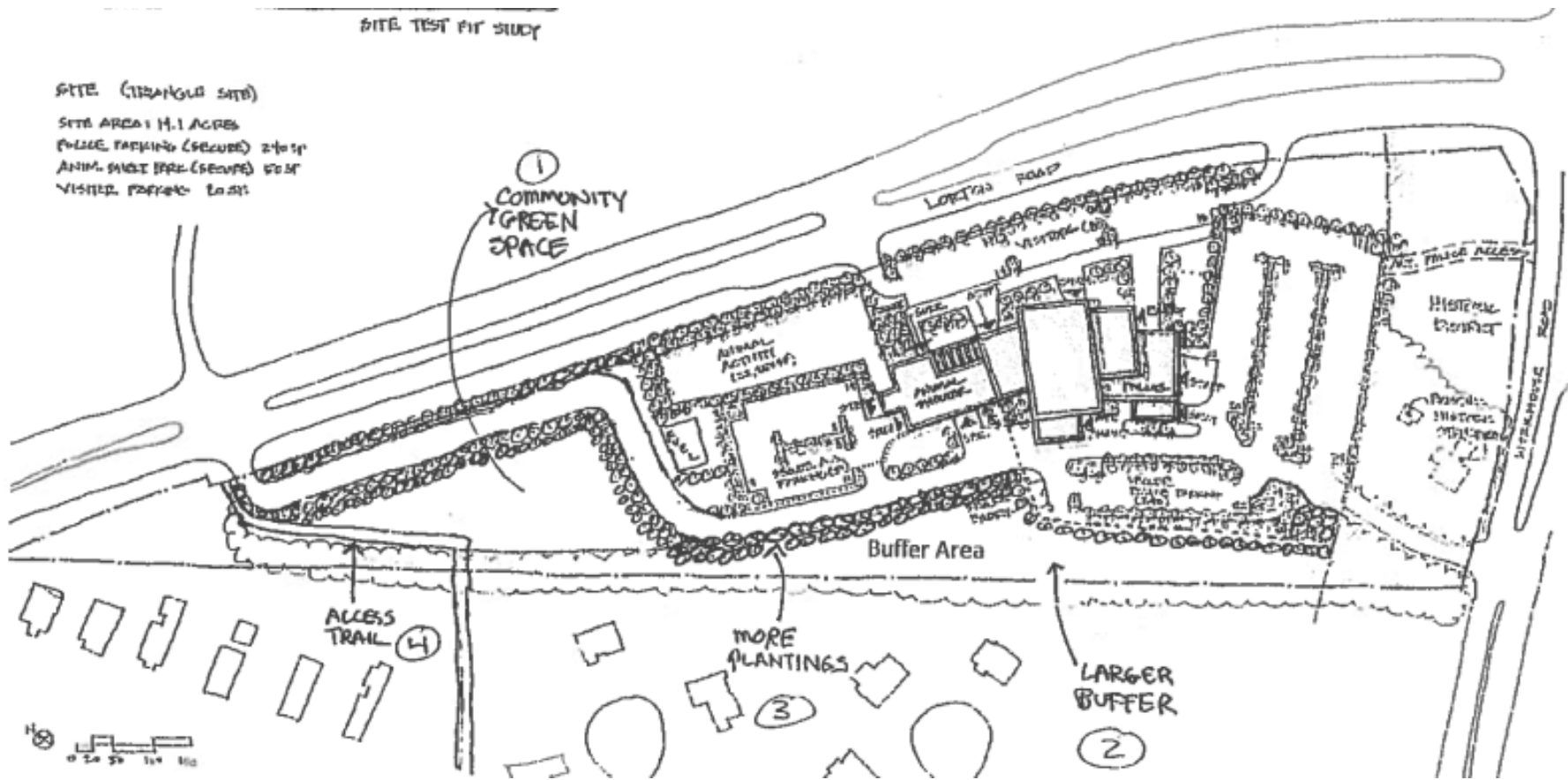




# South County Police Station and Animal Shelter

## STEERING COMMITTEE

### Site Plan (comments received 02.24.2018)



# South County Police Station and Animal Shelter

## STEERING COMMITTEE

Existing Site (aerial view)

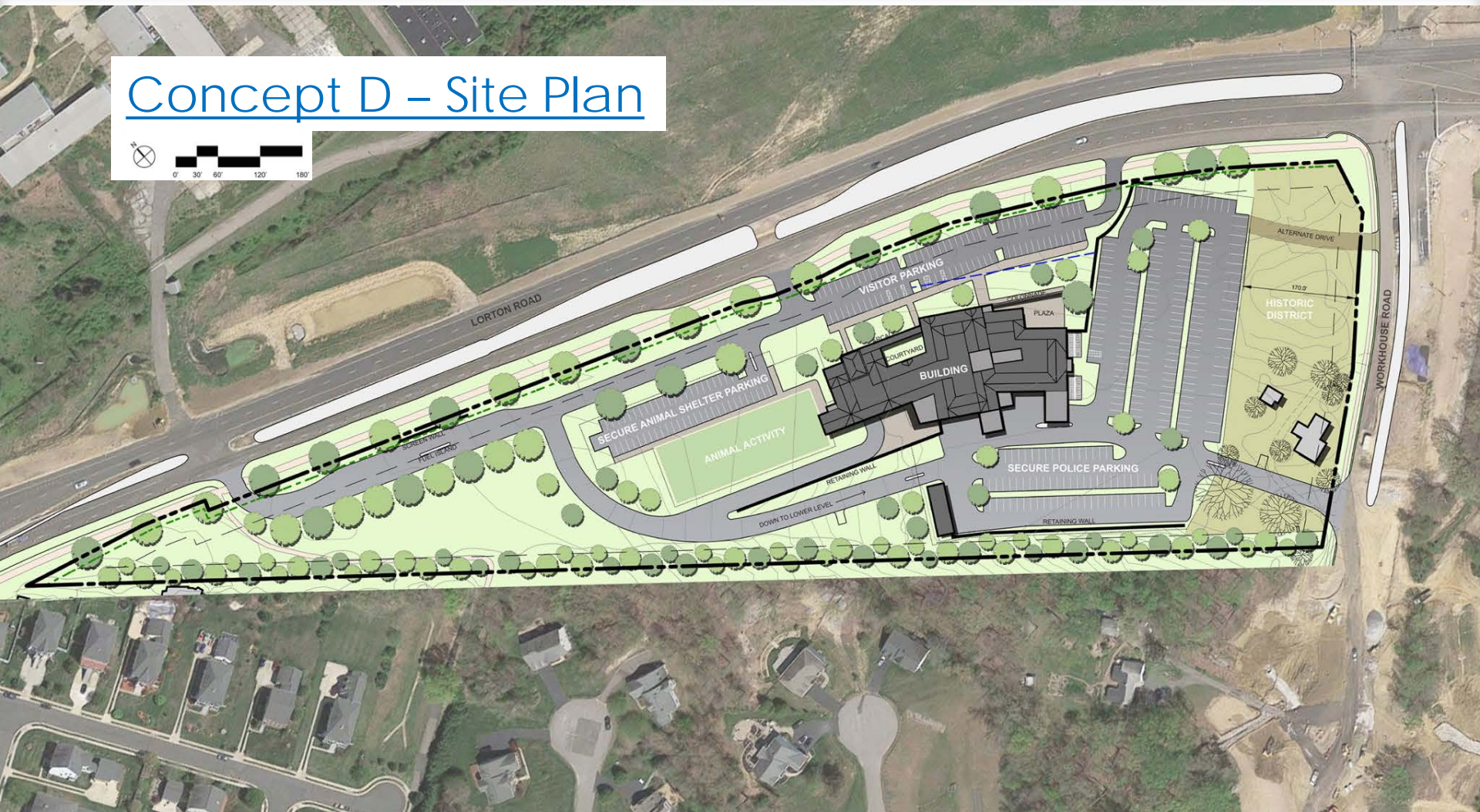




# South County Police Station and Animal Shelter

## STEERING COMMITTEE

### Concept D – Site Plan





South County Police Station and Animal Shelter  
STEERING COMMITTEE

Concept D – Aerial View from Lorton Road





South County Police Station and Animal Shelter  
STEERING COMMITTEE

Concept D – Animal Shelter Entrance



South County Police Station and Animal Shelter  
STEERING COMMITTEE

Concept D – Police Station Entrance





South County Police Station and Animal Shelter  
STEERING COMMITTEE

Concept D – Aerial View from Neighbors

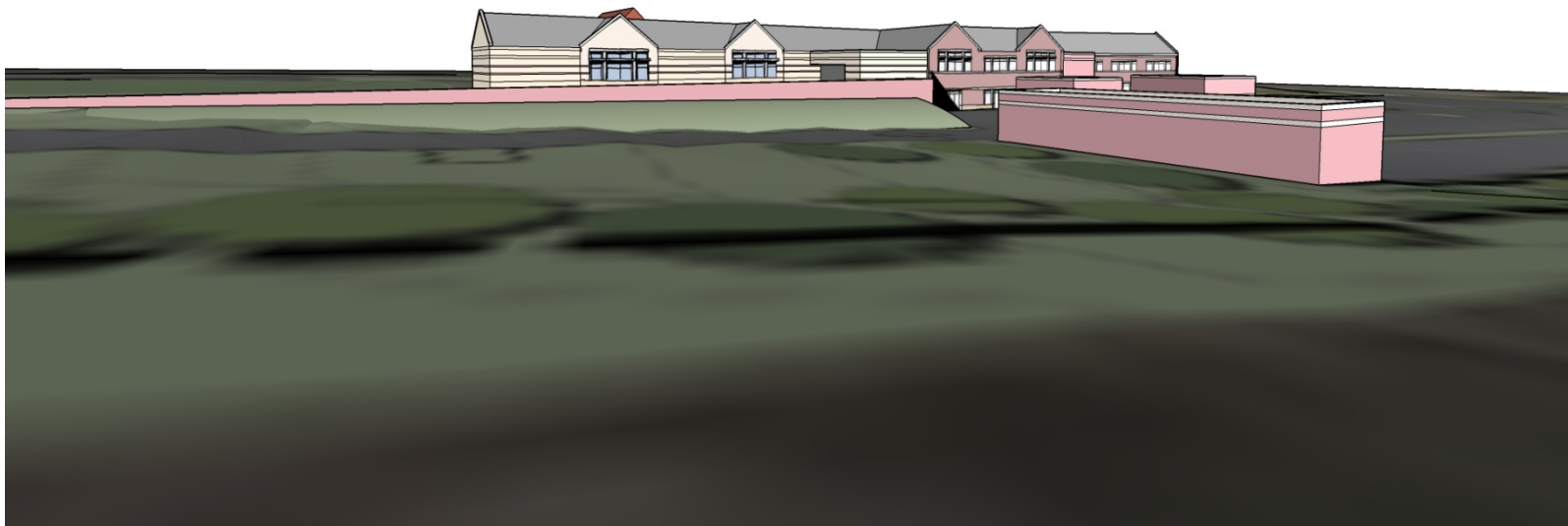


## Concept D – View from Neighbors (obstructed)





Concept D – View from Neighbors (unobstructed)



# South County Police Station and Animal Shelter

## STEERING COMMITTEE

### [View to Neighbors \(photos taken 04.03.2018\)](#)





## Path Forward

- Community Meeting TBD
- Start 2232 Process and Schematic Design June 2018